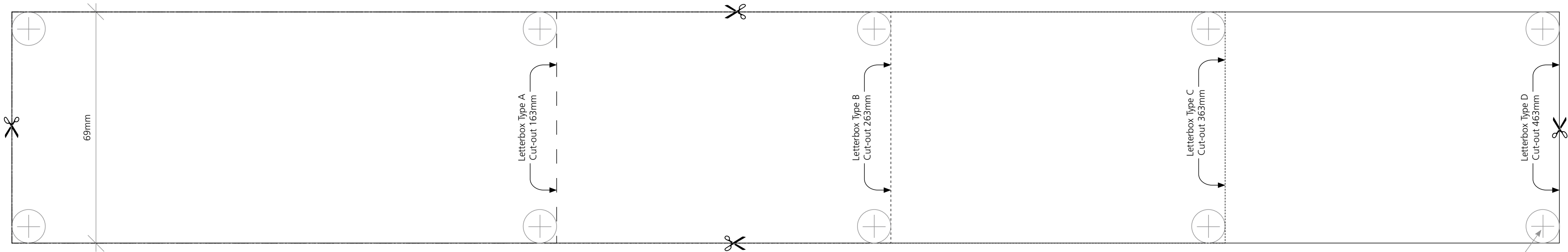
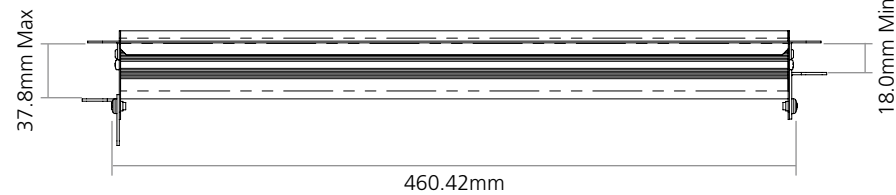
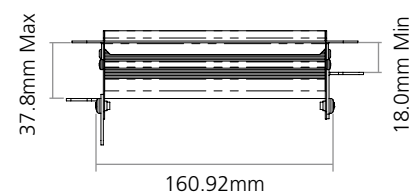
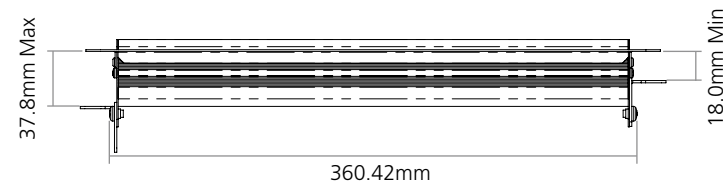
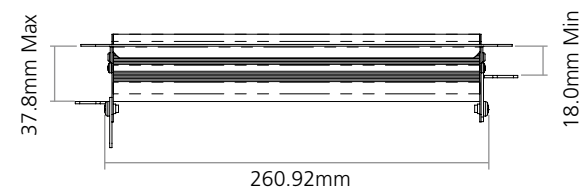
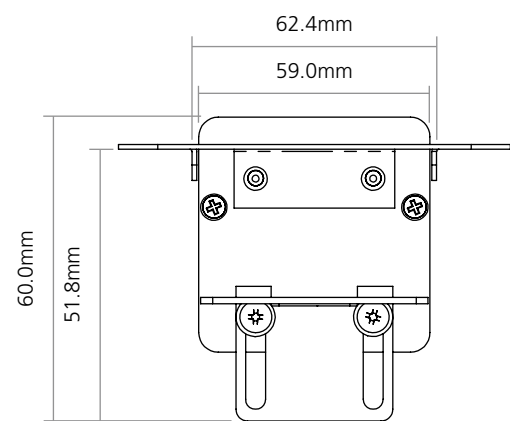


Surface Horizontal - Cut-out Guide

Important: The dimensions below are meant as a guide only. Please double check your marking out against the unit before cutting into the furniture. All measurements have a ± 1 mm tolerance to allow for errors while cutting.



We recommend drilling a $\varnothing 10$ mm hole to give access for the cutting blade but the corners must be removed.



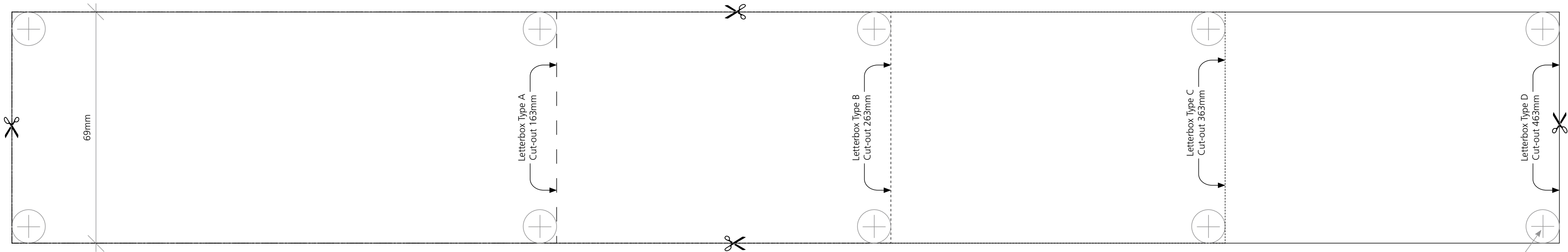
Surface fitting instructions

1. Pick a suitable position on the furniture ensuring there is sufficient clearance between the unit and the desk subframe.
2. Unpack the product and using the relevant template above, Letterbox Type A (Small), Type B, Type C or Type D (large), mark out and cut the aperture in the furniture.
3. The two fixing brackets must first be removed before lowering the unit into the aperture in the furniture.
4. Once in position the fixing brackets and nuts can be refitted on the underside of the furniture, pushing them up as far as they go before tightening the nuts. The unit can be secured using the screws provided if suitable for the furniture.

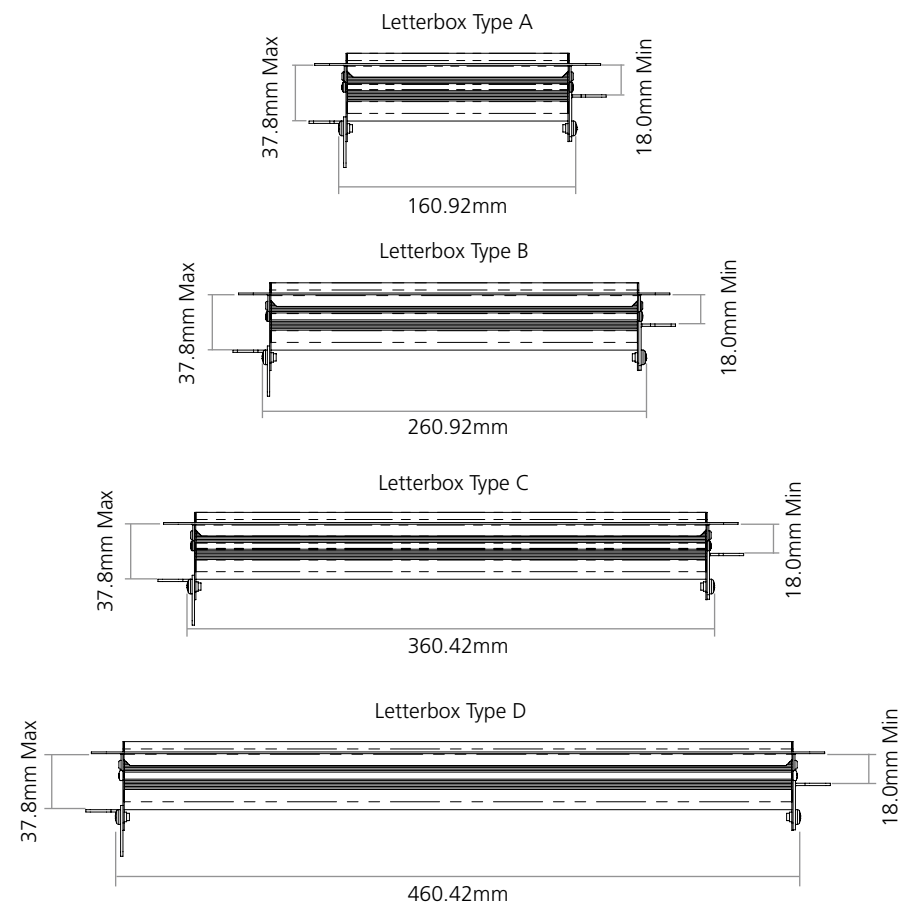
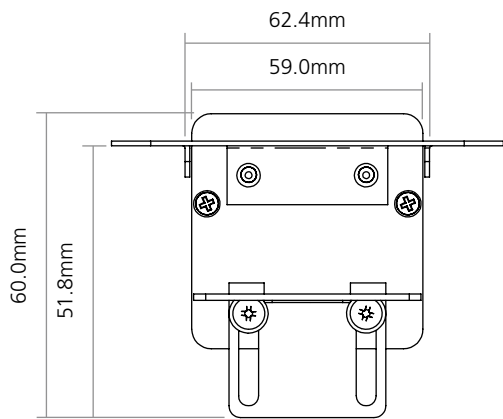
Note: All and any works must be carried out in accordance with the appropriate Health & Safety regulations. The unit contains no user serviceable parts. The retrospective installation of accessories must only be carried out by employees of CMD Ltd. Any failure to comply will invalidate any warranty.

Surface Horizontal - Cut-out Guide

Important: The dimensions below are meant as a guide only. Please double check your marking out against the unit before cutting into the furniture. All measurements have a $\pm 1\text{mm}$ tolerance to allow for errors while cutting.



We recommend drilling a $\text{Ø}10\text{mm}$ hole to give access for the cutting blade but the corners must be removed.



Surface horizontal fitting instructions

1. Pick a suitable position on the furniture ensuring there is sufficient clearance between the unit and the desk subframe.
2. Unpack the product and using the relevant template above, Letterbox Type A (Small), Type B, Type C or Type D (large), mark out and cut the aperture in the furniture.
3. The two fixing brackets must first be removed before lowering the unit into the aperture in the furniture.
4. Once in position the fixing brackets and nuts can be refitted on the underside of the furniture, pushing them up as far as they go before tightening the nuts. The unit can be secured using the screws provided if suitable for the furniture.

Note: All and any works must be carried out in accordance with the appropriate Health & Safety regulations. The unit contains no user serviceable parts. The retrospective installation of accessories must only be carried out by employees of CMD Ltd. Any failure to comply will invalidate any warranty.