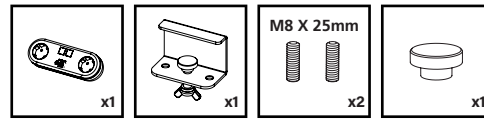
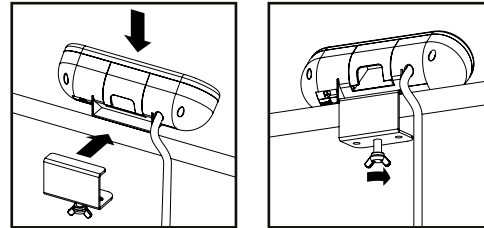


Contents



Mounting to desk

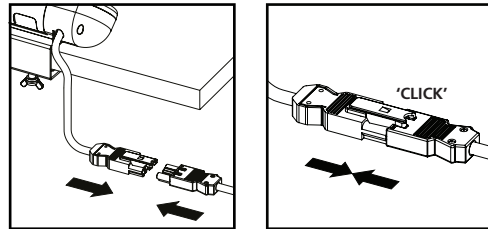


Locate Capsule on edge of desk. Offer up clamp to rear of Capsule and align to desk edge.

With the Capsule held between the clamp and desk, tighten the thumb screw/grub screws.

Connecting to power

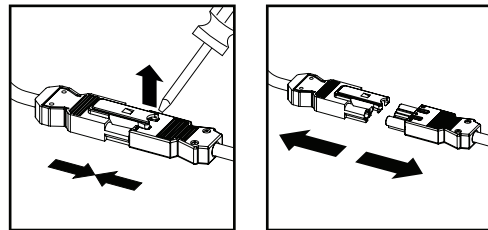
Connecting standard 3-pole connector



Plug the male 3-pole connector supplied as standard into a female powered connector.

Ensure the attached locking mechanism clicks into place on both connectors.

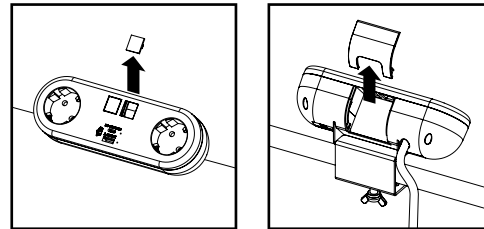
Disconnecting standard 3-pole connector



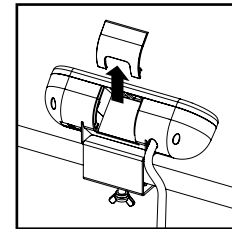
Use a suitable tool to release the locking mechanism.

Separate the connectors.

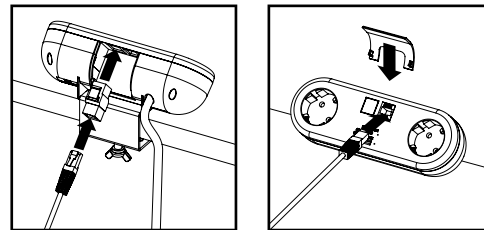
Connecting data/AV (if applicable)



Remove the keystone blanks from the front face of Capsule to reveal the data apertures.



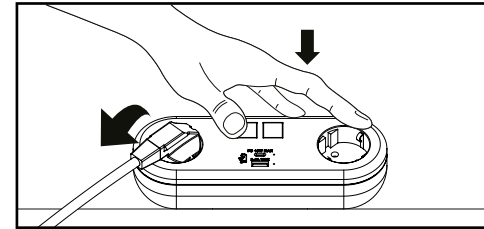
Lift out the keystone cover at the rear of the Capsule and put to one side.



Insert the required data keystone inserts into the data apertures. Insert cables.

Connect required data cables into the installed data keystone inserts.

Inserting and removing plugs



When inserting/removing plugs, please support the module with your free hand.

Additional information

Safety

- Incorrect use could lead to risk of electrocution.
- Connectors must not be engaged or disengaged when under load or live.
- Product to be used only for the intended purpose of distributing power and data in office and commercial environments.
- Installation is to be carried out in accordance with relevant Health & Safety regulations and only to be carried out by a skilled or competent person.
- The installation should be installed to comply with the relevant national standards and be inspected and tested prior to being put into service (in the UK BS 7671 Wiring Regulations or BS 6396 Office and Educational Systems Best Practice).
- Isolate the supply before installation or repositioning. Any locking mechanisms must be used and fully engaged.
- Do not misuse, dismantle or re-configure the product because doing so will invalidate the warranty.
- If a product incorporates RCD protection, the RCD should be regularly tested in-line with current standards.

Standards

- Refer to the Declaration of Conformity.

Further guidance

- Should the supply cable need replacing, contact CMD.

Product care

- Clean using a dry cloth. No abrasives or solvents to be used on the product.
- Do not drop or expose to moisture.

